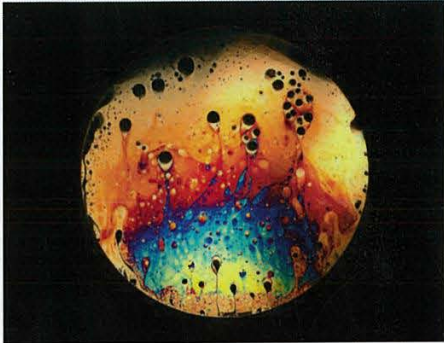


Practitioner's Statement

Colours of Life

Sarah Schutz

Every day we go through a rollercoaster of different emotions right from infancy through to seniority. We go through positive and negative times which often have an impact on our outlook on life. The images appear like cells, organic forms of nature which make us who we are. Our genetics affect how we respond to different stages within our lives, which is portrayed in my images.



Jane Thomas 'Untitled' 2013

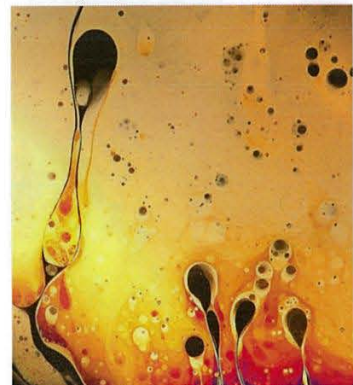
The inspiration for my original idea came from photographer Sam Javanrouh, who creates spherical panoramas. Through further investigation into this style I discovered the technique of soap film photography. Research found photographer Jane Thomas, who inspired me to change the direction for my first practical. My work represents the highs and lows of life which are portrayed through the use of bright colour and patterns. The air bubbles represent the dark moments that enter our lives, but shows that the impact of hardship creates interest within our lives. This is an abstract approach to the topic and the concept of the work.

The four images portray the different stages of life; mimicry, discovery, commitment and legacy. The image of mimicry, often known as childhood, demonstrates happiness and contentment as we look to those around us for guidance. The discovery image shows our lives becoming unsettled though there are still vibrant colours representing youthfulness. In the commitment stage is when we start to settle down. Normality starts to become essential in our lives and we start to repair ourselves. The image of legacy represents what you want your loved ones to remember you as when you eventually fade away.

Trial and error was a major part in this work as determining the ideal blend of ingredients for the soap solution was paramount. The issue of the visibility of the bubble was also a problem. To resolve this several attempts were made to make a blower which would not be shown due to the position of the lamp. Determining which soap solution gave the most vibrant and interesting patterns was a major part in the planning process. For the final image I decided to use the Iodine solution as the colours and patterns were the most interesting.

The circle shapes were inspired by Kenneth Noland's circular paintings. This gave me the idea to focus the soap film in the centre of the image with a black background. The image was captured with a reversing ring to substitute for the absence of a macro lens. The bubble ring was then removed through using the healing brush in Photoshop. This left a plain black background behind the bright colours.

The images have been hung show the viewer that as life progresses, structure and normality change and that colour often vanishes, though it is through trials that we become who we are. Overall I am pleased with the final outcome of my practical as it combines four simple images with a strong meaning to make an impact on the viewer. I was also able to learn a new style of photography and further extend my existing skills



Jane Thomas 'Untitled' 2013